

CARTRIDGE FILTER

CRACE RB-Pure Filter Cartridges

Depth Technology Filter Cartridge

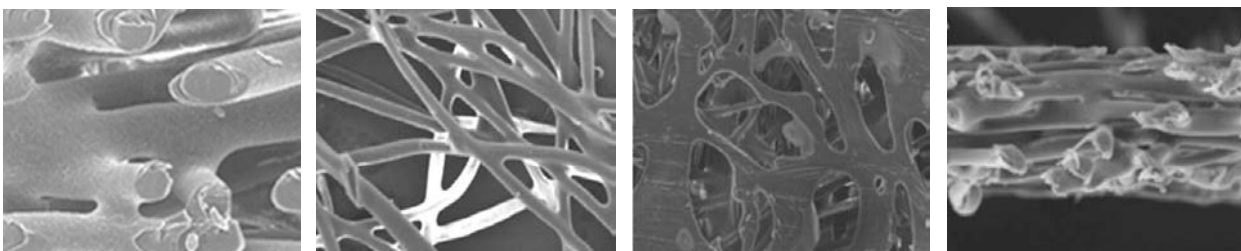


Application

- Pharmaceutical & Hospital
- Water Treatment
- Food & Beverage
- Electronics & Semiconductor
- Solvent, Paint, Ink, Resins
- High-Viscosity liquid filtration

Bi-component Structure Filter

- Used 100% PP/PE conjugated fiber to create 3-dimensional skeleton structures.
- High functional filter that maximizes the high water flow rate and removal efficiency of processed water and chemical solution.
- Maximizes the combining power of each non-woven layers.
- Heat-combination chemical free filter.
- Keeps a high-level cleanness.



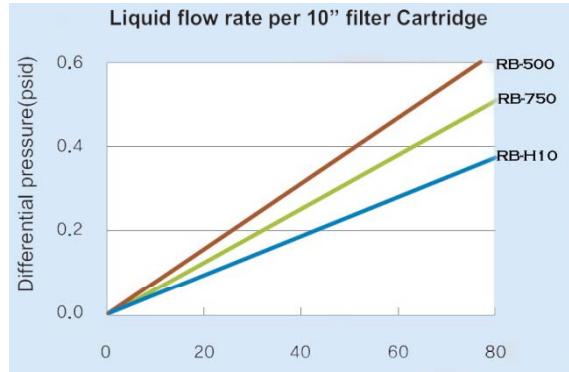
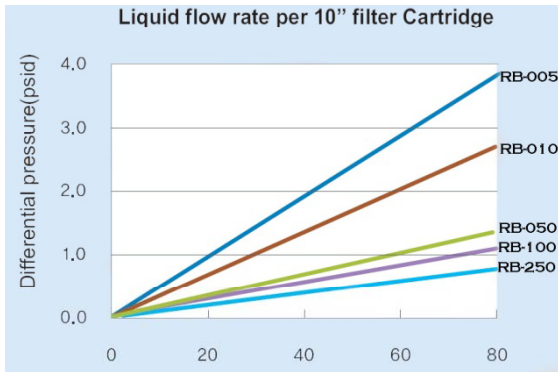
CRACE RB-Pure

Features	Advantages	Benefits
100% PP/PE & 3-dimensional skeleton structures	Long life time & high flow rate , enhanced porosity in cartridge filter	Easy to see the high flow rate and efficiency in process, simultaneously
High functional filter	High durability at high differential pressure	Suitable for food & beverage and other applications
Depth filtration	Linear flow path & very stable pore size	Keeps a high-level cleanness



CRACE RB-Pure Filter Cartridges

Flow Specification



Air Flow rate per 10" filter Cartridge

(at 100kPa)

Grade	Air Flow(lpm)	Grade	Air Flow(lpm)
005	1,540	250	2,437
010	1,810	500	2,457
050	2,050	750	2,547
100	2,150	H10	2,647

Performance Specification

Material of Construction	Recommended Operation Conditions	Removal Ratings						Cartridge Dimensions
		Grade	Rating(μ m)		Grade	Rating(μ m)		
Media : Polypropylene Polyethylene Bi-component fiber Structure : Coreless cartridge	Maximum Differential Pressure : 4.8bar at 25°C Maximum Temperature : 80°C		Abs.	Nom.		Abs.	Nom.	In diameter : 30mm Out diameter : 62~65mm Length(mm) : 250, 500, 750, 1000
		005	6	0.5	250	60	25	
		010	13	1	500	95	50	
		050	25	5	750	110	75	
		100	35	10	H10	150	100	

RB-Pure Ordering Guide

Filter Model	Length (mm)	Material	Grade Designation	End Cap	Gasket Material
			Nominal Rating		
RB	1(250)	P (PP/PE)	005 (0.5 μ m)	B (SOE, 226 with Fin)	N (Buna-N) S (Silicon)
			010 (1 μ m)		
	2(500)		050 (5 μ m)	C (SOE, 222 with Fin)	
			100 (10 μ m)		
	3(750)		250 (25 μ m)	F (SOE, 222 with Flat)	
			500 (50 μ m)		
	4(1000)		750 (75 μ m)	D (DOE with Gasket)	
			H10 (100 μ m)		



CRACE RB-Pure